

## Custom lifting stations for pumping kitchen wastewater into grease separators for free-standing installation

**Material:** Polyethylene PE-HD

**Version:**

upstream from the grease separator

**Custom made product:**

e-Mail: [info@kessel.com](mailto:info@kessel.com)

In the case where the grease separator is located higher than the collected wastewater from the kitchen, the EN 1825 norm requires the use of special lifting stations.

Standard lifting stations with vortex or macerating pumps 'mix' the wastewater as it is pumped. This causes the food waste and grease from the kitchen to fully mix with the wastewater which can negatively effect the efficiency of an EN 1825 grease separator. For this reason, positive displacement pumps (also known as 'screw' pumps) are required for use in these cases. A screw pump 'pushes' the wastewater into the grease separator, without any mixing taking place, allowing for proper grease separator operation.

For additional information concerning Kessel positive displacement pumps, please contact KESSEL directly.

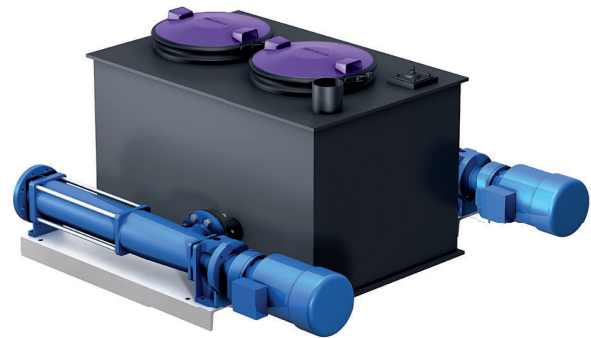


Illustration shows screw pump double system

- 1 Drains in the kitchen
- 2 Inlet pipe
- 3 Collecting tank
- 4 Screw pump double system
- 5 Control unit
- 6 Pressure pipe
- 7 Calmed inlet
- 8 Grease separator
- 9 Sampling chamber

